



**Grow Your  
Water Conditioning  
Business ...**

***It's Profitable  
& Easy!***

# **Water Conditioning Product Brochure**

[www.benjaminfranklinplumbing.com](http://www.benjaminfranklinplumbing.com)





# Stand Out From The Crowd

## Our Most Powerful Value Proposition Yet!



1. Exclusive brand only for our members.
2. Line consists of water softeners, specialty systems, whole-house filters, reverse osmosis and point-of use filtration.
3. Can't be price shopped. Not available on-line or in big box stores.
4. Exclusive control valves with custom digital programming for your name and phone number.
5. Custom on-site training and webinars.
6. Dedicated 1-800 tech support line staffed by technicians 1-855-714-3385.
7. Free water testing with analysis or test kits available for instant test results.
8. Professional marketing materials.
9. Fast, easy installation and diagnosis.
10. Free freight on minimum orders of \$3,000
11. Improved lead time shipping from our three distribution centers.
12. Tech promotion sell first 5, get 1 at no charge for your home.
13. 60% percent off for employee home. Need testimonial after 30 days.
14. Earn rewards accrual dollars towards the Rewards Cruise!



**Partner With Us & Grow Your  
Water Conditioning Business!**



# Protect Your Clients From Their Water

## Hard Water Facts:

1. **Showerheads** on hard water lost 75% of flow rate in less than 18 months
2. **Tankless water heaters** failed after only 1.6 years on hard water. On soft water they maintained original factory rating
3. **Gas water heaters** are up to 24% more cost efficient on soft water
4. **Electric water heaters** can accumulate as much as 30 lbs of rock shortening the life of the heating element
5. **You can use 50% less soap and detergent** with soft water. Hard water makes soap work harder



Help Them **Protect Their Biggest Investment**



# Remove Chlorine & Chloramines



**Granular Activated Carbon** effectively adsorbs Chlorine.

**Catalytic Carbon** is a Premium Carbon that is more effective for Chloramine reduction as well as Chlorine.

## ***Why Remove Chlorine?***

***Once water arrives safely at the home there is no further need for chlorine.***

Besides potentially harmful by-products, chlorine's bad taste and odor, can effectively be reduced with a carbon water filtration system installed right in your home.

Chlorine and chloramines are also strong oxidants that quickly destroys plastic & rubber components such as rubber seals and gaskets causing leaks in appliances and plumbing fixtures. In fact nearly 14% of the water a typical homeowner pays for is never even used – it leaks down the drain!

The addition of monochloramine can make also make water more corrosive, which may lead to pipe corrosion and increased levels of lead or other contaminants in the water. Chlorine and chloramines can also cause dry, itchy skin, causes rashes, irritate eyes, nose and throat and cause digestive discomfort.



## ***Leaky Toilet?***

Chlorine destroys rubber seals and gaskets causing leaks

***Remove Disinfection Products  
Before They Come Out Of The Tap!***



# Time Saving Features



## Water Conditioning Products Designed For The Professional Plumber

Time is money.

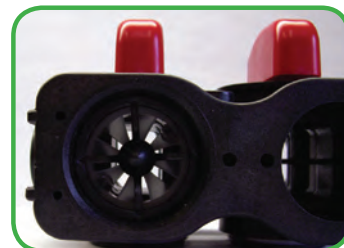
Benjamin Franklin Elite branded water conditioning products are designed to decrease installation time.

### Faster Installations:

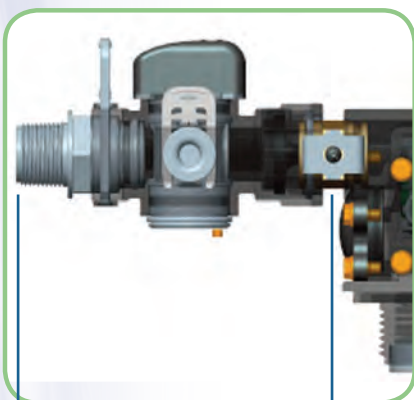
- Quick Connect Bypass comes with  $\frac{3}{4}$ " 90° NPT elbows and 1" straight NPT connectors. Optional  $\frac{3}{4}$ " straight and Shark Bite® fittings also available.



- Unique Meter-in-Bypass Design saves space and requires fewer connections.



Benjamin Franklin Elite Bypass



1 Connection. Comes Pre-Installed



Competitive Valve

9 inches  
3 Connections

**Time is Money! Faster Installations  
Without Sacrificing Quality!**

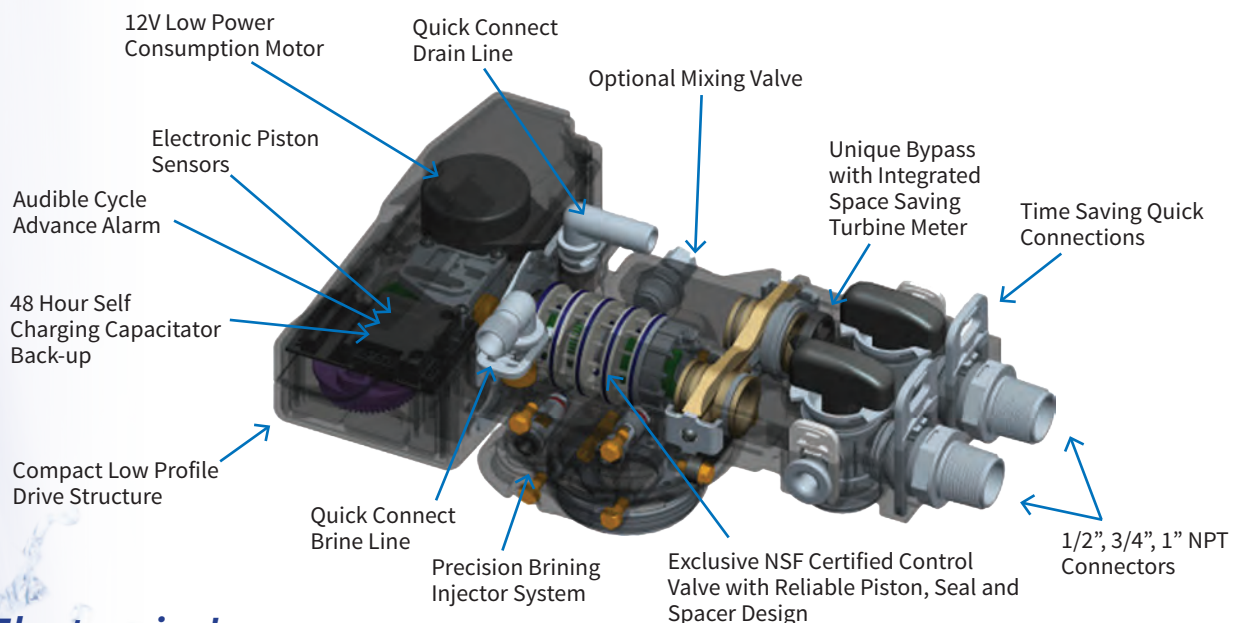
# Time Saving Features



- ⇒ Simple, intuitive electronics for easy start-ups
- ⇒ Rotating Diagnostic Screen prevents needless service calls. Customers are provided key diagnostic information such as 'Date Last Regenerated' and 'Estimated Days to Next Regeneration' 'without touching a button'!
- ⇒ Includes customizable 'Dealer Screen'!



- ⇒ Drain Line is designed with a quick connect fitting and O-ring seal. No more messing with pipe dope or Teflon® tape!
- ⇒ The 3/8" quick connect elbow allows the brine line to be connected in seconds
- ⇒ The Power Cord even has a quick connect which keeps it out of the way until needed.
- ⇒ All softeners come with 10 feet of drain line and hose clamp.



**Simple Electronics!**  
**No Confusing Codes or Symbols!**



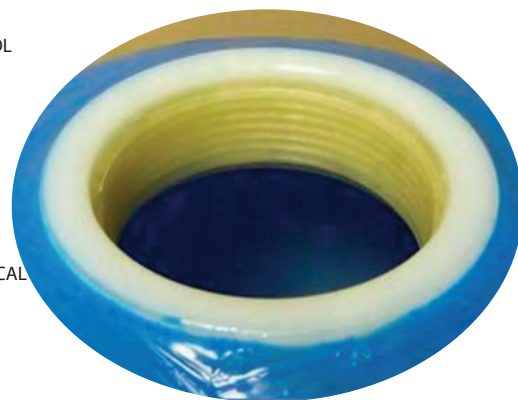
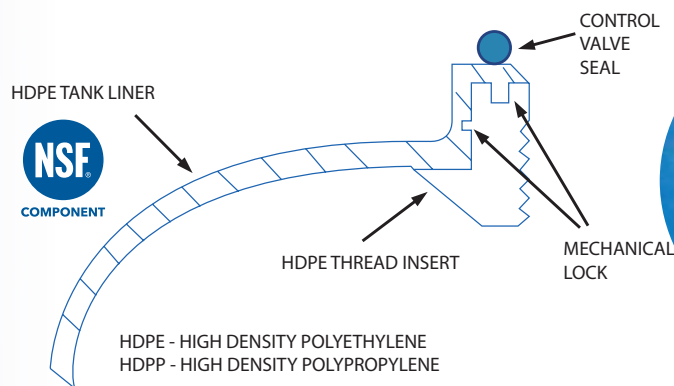
# Quality Comes First!



## Reliable Performance You Can Count On!

Benjamin Franklin Elite water conditioning products and components have been third party tested and certified to the industries most exacting standards

- All Water Softeners are tested and certified by NSF International against NSF / ANSI Standard 44 for hardness reduction and efficiency
- WQA Gold Seal Tested & Certified
- NSF Certified control valves
- NSF Certified fiberglass reinforced pressure vessels
- ISO9001:2008 Quality Assurance Certified and ISO14001:2004 Environmental Management System Certified State-of-the-Art Manufacturing Facility



**Over 1,000,000 tanks without a leak from a manufacturing defect!**  
No welds, joints or seams in the tank liner and tank design 100% eliminate leaks and failures from "cracked collars".



*Our special manufacturing process gives the tank a deep high gloss lustre far superior to any other tank on the market!*

**Independently Tested and Certified Products & Processes!**



# Water Softeners

## Introducing the 685 High Efficiency Water Softener

*A High-Efficiency Water Softener that will set  
you apart from the competition by saving your  
client salt, water & money!*

### High-Efficiency Features:

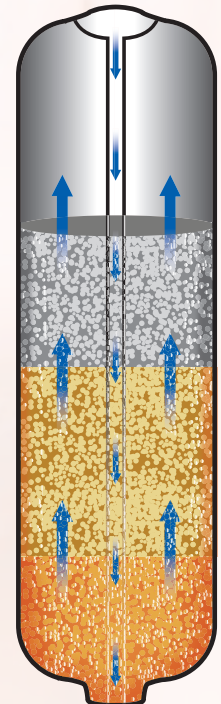
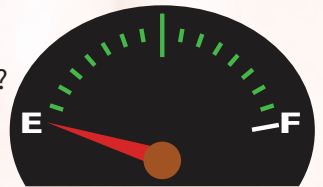
1. Upflow Regeneration
2. Precision Brining
3. Adjustable Backwash Frequency
4. Automatic System Flush
5. Soft Water Immediate Recharge
6. Soft Water Refill

### 1. Upflow Regeneration Just Makes Sense!

Downflow softener systems deplete the unused portion of the bed every regeneration. It is like draining your cars gas tank before filling up!?

Upflow regeneration, on the other hand, **preserves the unused portion of the bed by reversing the brine flow**. This causes the hardness minerals to flow up through only the depleted portion of the bed and out to the drain.

In fact, the bottom portion of the bed becomes **'supercharged'** providing even softer water and ensuring no hardness slippage which can occur with downflow softeners.



**Save Salt & Water!**  
**Lower Operating Costs**  
**by as much**  
**as 68%!**

**Available in Traditional *Twin Tank***



# Water Softeners

## 685 High-Efficiency Softener Features



### 2. Optimal Precision Brining

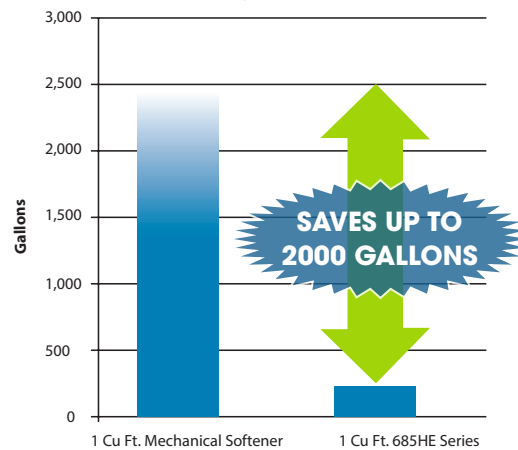
While traditional systems pre-make 100% of the brine required for a full regeneration, the 685HE premakes only 70% of the brine. Thirty minutes before regeneration, the system calculates the precise amount of brine required to regenerate only the depleted portion of the bed **saving anywhere from 15 to 30% more salt.**

### 3. Adjustable Back-Frequency

On clean municipal supply there is no backwash the bed every single re- Now you can preset to backwash at less intervals.



### Estimated Annual Back Wash Water Usage



wash

pal water  
need to

generation.  
the softener  
frequent

### 4. Automatic System Flush

When no water is used for 7 days, the system automatically “refreshes” the tank and plumbing system with a quick 10 minute back wash and rinse **detering bacteria growth**

### 5. Soft Water Recharge

Never run out of soft water. If reserve capacity is depleted by a spike in water usage, the system will immediately perform a quick 20 minute “recharge” regeneration to restore up to 33% system capacity keeping you in soft water until a complete regeneration occurs that evening.

### 6. Soft Water Brine Tank Refill

Conserve capacity and keep brine tank cleaner by adding treated soft water to brine tank rather than raw untreated water.

Features Today's  
**'Green' Consumer Will Value!**

# Water Softeners

## 685 HE Features



### Standard Features:

- NSF Certified electronic upflow high-efficiency control valve with proven **piston, seal & spacer design**
- Rotating 'No Touch' Diagnostic backlit 16 Character LCD display with customizable screen for Dealer Name and telephone #
- NSF Certified Pressure Tank with attractive condensation jacket with chrome finish
- WQA Gold Seal approved cation softening resin
- Complete NSF 44 System Certification
- Plastic salt grid prevents salt bridging (twin tank only)
- Condensation tank jackets with stainless finish (twin tank only)
- Brine safety valve provides added overflow protection
- Time saving **quick connect fittings** on bypass, drain line, brine line and power cord
- Space saving bypass with integrated turbine meter
- Hose clamp and **10' drain line** included
- **10 Year** Limited Warranty

685 Series Upflow High-Efficiency Twin Tank Water Softener

ITEM #	MODEL	WARRANTY	TANK SIZE	CU FT	WEIGHT (LBS)
17014571	WS685HET-1.0	10 Year Ltd.	9 x 48	1.0	122
17014572	WS685HET-1.5	10 Year Ltd.	10 x 54	1.5	155
17014573	WS685HET-2.0	10 Year Ltd.	12 x 52 (no jacket)	2.0	158

Features Today's  
**'Green' Consumer Will Value!**





# Water Softeners

## 665 HE Features



## Solid, Reliable Performance With More Features Than Your Typical Entry Level Softener!

Offer your clients more for less. Compare this softeners quality and features to other entry level softeners on the market.

### Standard Features:

- Simple Electronics - Just enter the date and time, # of people & water hardness.
- Rotating customizable screen for Dealer Name and telephone #, date & time
- NSF Certified electronic downflow control valve with proven **piston, seal & spacer design**
- Manual index to cycle position for fast & easy installation and service
- NSF Certified High-Gloss Pressure Tank
- WQA Gold Seal approved cation softening resin
- Complete NSF 44 System Certification
- Plastic salt grid prevents salt bridging
- Brine safety float provides added overflow protection
- Time saving quick connect fittings on **bypass, drain line, brine line and power cord**
- Space saving bypass with integrated turbine meter
- Hose clamp and 10' drain line included
- 5 Year Limited Warranty

665 Series Downflow Twin Tank Water Softener

ITEM #	MODEL	WARRANTY	TANK SIZE	CU FT	WEIGHT (LBS)
17014561	WS665-1.0	5 Year Ltd.	9 x 48	1.0	104
17014562	WS665-1.5	5 Year Ltd.	10 x 54	1.5	133



**A Reliable Water Softener For the Economy Minded Consumer**

# Whole-House Water Refinement

## 685HE HTO Features

*Enjoy luxurious soft water plus remove bad taste and odor caused by chlorine, chloramines or organic matter!*

### Standard Features:

- Same great features as the 685 HE Upflow softener with the added benefit of whole-house carbon filtration
- Two tank system keeps the media beds separate and allows for more carbon contact improving chlorine, chloramines and organic removal
- Replace carbon without having to replace the softening resin (unlike many traditional mixed bed systems)
- Enjoy the same benefit as separate systems but with the cost of only one control valve

**Catalytic Carbon** is a Premium Carbon that is very effective for Chloramine reduction as well as Chlorine.

**KDF Process Media** is used in models where hydrogen sulfide (H<sub>2</sub>S) causes a rotten egg odor.

**TIP:** If the rotten egg odor comes only from the hot water it is likely due to the corrosion of the water heaters anode rod as it produces H<sub>2</sub>S. Using an anode rod made of zinc or aluminum can stop this problem. If it comes from hot & cold treatment is required.



**685 Series HTO (Hardness, Taste & Odor) With Catalytic Carbon (chloramines reduction)**

ITEM #	MODEL	WARRANTY	TANK SIZE	CU FT	WEIGHT (LBS)
17014591	HTOC685-1.0	10 Year Ltd.	9 x 48 (2)	1.0 Resin 1.0 Cat. Carbon	154
17014592	HTOC685-1.5	10 Year Ltd.	10x54 (2)	1.5 Resin 1.5 Cat. Carbon	171

**685 Series HTO With Catalytic Carbon & KDF (Hydrogen Sulfide / Rotten Egg Odor)**

ITEM #	MODEL	WARRANTY	TANK SIZE	CU FT	WEIGHT (LBS)
17014595	HTOCK685-1.0	10 Year Ltd.	9 x 48 (2)	1.0 Resin 1.0 Cat. Carbon	154
17014596	HTOCK685-1.5	10 Year Ltd.	10x54 (2)	1.5 Resin 1.5 Cat. Carbon	171

**Truly Refined Water From  
Every Tap In Your Home!**





# Automatic Water Filters

## 685 & 665 Carbon Taste & Odor Filter



1 teaspoon of carbon  
= the surface area of a  
football field

### Taste & Odor Filters Make Bad Water Great!

Problem water is no problem. High quality granular activated carbon removes chlorine and adsorbs organic matter and other substances that make water smell and taste bad.

#### Standard Features:

- Simple Electronics - Just enter the date and time and days between backwash
- Rotating customizable screen for Dealer Name and telephone #, time & date
- NSF Certified electronic downflow control valve with proven piston, seal & spacer design. Includes manual index feature to cycle position for fast & easy installation and service
- NSF Certified High-Gloss Pressure Tank
- High Quality GAC
- Time saving quick connect fittings on bypass, drain line, brine line and power cord
- Space saving bypass with integrated turbine meter
- Hose clamp and 10' drain line included
- 10 Year Limited Warranty on 685 Models and 5 Year Limited Warranty on 665 Models

#### 685 Series Standard Coconut Carbon

ITEM #	MODEL	WARRANTY	TANK SIZE	CU FT	WEIGHT (LBS)
17014661	CF685-1.0	10 Year Ltd.	9 x 48	1.0 Carbon	60
17014662	CF685-1.5	10 Year Ltd.	10 x 54	1.5 Carbon	78
17014665	HTOCK685-1.0	10 Year Ltd.	10 x 54	1.5 Carbon	78
17014666	HTOCK685-1.5	10 Year Ltd.	10 x 54	1.5 Carbon	78

#### 665 Series Standard Coconut Carbon

ITEM #	MODEL	WARRANTY	TANK SIZE	CU FT	WEIGHT (LBS)
17014631	CF665-1.0	5 Year Ltd.	9 x 48	1.0 Carbon	60
17014632	CF665-1.5	5 Year Ltd.	10 x 54	1.5 Carbon	78

#### 665 Series Standard Coconut Carbon Filter With KDF (Hydrogen Sulfide / Rotten Egg Odor)

ITEM #	MODEL	WARRANTY	TANK SIZE	CU FT	WEIGHT (LBS)
17014681	CFK665-1.0	5 Year Ltd.	9 x 48	1.0 Carbon	62
17014682	CFK665-1.5	5 Year Ltd.	10 x 54	1.5 Carbon	80

Remove **Bad Taste & Odors Caused by Chlorine,  
Chloramines, Hydrogen Sulfide & Organics**

# Automatic Water Filters

## 665 Chemical Free Filtration Solutions



*Natural oxidation removes iron, manganese, sulfur without chemicals, air pumps or a venturi! Uses 50% less water than traditional filters!*

1. Raw water passes through a compressed pocket of air in the first tank
2. The air precipitates the iron into solid form and is removed when it passes through the birm media bed in the second tank
3. The media acts as a catalyst in the reaction between iron and oxygen that causes the iron to precipitate into a solid
4. As more water passes through the unit the air becomes depleted and the media becomes loaded with the iron
5. Periodic automatic regeneration replenishes the supply of air and cleans the media of filtered iron
6. The media is not consumed making this a much more economical iron removal process

665 Series Chemical-Free Iron & Sulfur Filter

ITEM #	MODEL	WARRANTY	TANK SIZE	CU FT	WEIGHT (LBS)
17014651	IS665-1.0	5 Year Ltd.	9 x 48 (2)	1.0 Birm	150
17014653	IS665-1.5	5 Year Ltd.	10 x 54 (2)	1.0 Birm	150

**Remove Iron, Sulfur**  
**Without Messy Chemicals**



# Whole-House Filtration

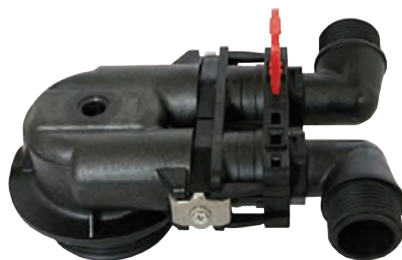
## Non-Backwashing Carbon Filter

*This low cost filter option allows for quick tank replacement or rebedding when the carbon is exhausted.*



### Standard Features:

- Economical whole-house carbon filtration
- Reduce chlorine, organics bad taste and odors.
- Quick connect fittings for quick exchange
- Plumbed to provide upflow service flow rates
- 5 – 8 gpm flow rate
- Bypass valve included



*Economical non-back-washing distribution head with convenient quick connect fittings*



Non-Backwashing Carbon Filter

ITEM #	MODEL	WARRANTY	TANK SIZE	CU FT	WEIGHT (LBS)
17014612	CFNB-1.5	5 Year Ltd.	10 x 54	1.5 Carbon	78
17014614	CFNB-1.5 (KDF)	5 Year Ltd.	10 x 54	1.5 Carbon	78

## Low Cost Carbon Filtration

# Drinking Water Solutions

## QCRO & QCUF Drinking Water Systems

Water conditions can vary even in the same community. QCRO and QCUF Systems can be configured to meet your specific drinking water requirements.

There are ten interchangeable filters with a variety of treatment options that can be tailored to local water conditions, so your water is the best it can be.

## Customized Drinking Water



**QCRO**

*The innovative QC twist and lock design makes service simple.*



**QCUF**

## Product Specifications

**Sediment Filters.** Screens out sediments and particles. Various micron size filters are available.

**Carbon Filters.** Reduces elements that cause water to taste and smell unpleasant, including chlorine taste and odor.

**Reverse Osmosis Filters.** Reduces dissolved substances. Various capacity membranes are available.

**Specialty Filters.** Optimize drinking water taste and adjust to local water supply with a wide array of custom filter options.



**Manifold Assembly.** The single manifold ensures reliability. Houses four separate filter technologies in a unique space saving design.

**Automatic Shutoff Valve.** Shuts off the system when reservoir tank is full.

**Reservoir Tank.** Durable, high quality, powder coated, steel tank ensures you'll have a plentiful supply of refreshing water. Various size tanks are available.

**Designer Faucet.** Multiple styles and colors are available. (VS888 faucet shown)



# Drinking Water Solutions

## QCRO & QCUF Drinking Water Systems

### Filter Cartridge and Single Stage Standalone System Specifications

	Sediment Filter	Carbon Block Filter	Carbon Block Filter	GAC Carbon Filter	pH Booster Filter Cartridge	UF (Hollow Fiber) Membrane	Carbon Block - 1 Mic Filter
<b>Purpose</b>	Sediment Removal	Chlorine Taste and Odor	Chlorine Taste and Odor	Polishing - Taste and Odor	Raise pH of water and removal of chlorine, taste and odor	Ultra Fine Filtration	Chlorine Taste and Odor, Particulate Reduction
<b>Type</b>	Polypropylene	Carbon Block	Carbon Block	Granular Activated Carbon Filter	pH Booster and Remineralizer	Hollow Fiber Mechanical Filtration	Carbon Block
<b>Micron</b>	5	5	50	—	—	0.1	1
<b>Capacity*</b>	2000 gallons	2000 gallons	2000 gallons	2000 gallons	To be changed every 6 months	To be changed every 12 months	750 Gallons
<b>Minimum Flow Rate @ 60psi</b>	0.5 gal/min	0.5 gal/min	0.5 gal/min	0.5 gal/min	0.5 gal/min	0.5 gal/min	0.5 gal/min
<b>Single Stage System Model #**</b>	SEDQC1/4	CBQC1/4	CB50QC1/4	GACQC1/4	PHQC1/4	UFQC1/4	CB1QC1/4

\* May vary depending on water quality

\*\* Single Stage Standalone System Port Connection Size - 1/4" Quick Connect

Feed Water Guidelines	
Maximum TDS	2000 ppm
Hardness	<7gpg
Iron (Fe)	<0.2ppm
Manganese (Mn)	<0.05ppm
Hydrogen Sulfide	0.0ppm
Turbidity	<1.0NTU
Feed Water Pressure	40-100psi
Temperature	40-100°F
pH Range	3.0-11.0
<b>Note:</b> Pretreatment suggested if conditions exceed parameters. Must be installed on potable water.	



IAPMO R & T Certified against NSF 58 for the reduction of following substances as verified and substantiated by test data; Barium, Cadmium, Copper, Fluoride, Hexavalent Chromium, Lead, Arsenic (V) (Less than 300 ppb reduction), Radium 226/228, Selenium, TDS, Trivalent Chromium, Turbidity.



IAPMO R & T Certified against CSA B483.1

### RO Membrane

Purpose	TDS Reduction
<b>Type</b>	Thin film Composite Membrane
<b>Recovery</b>	25%
<b>TDS Reduction %</b>	95%
<b>Rating</b>	50 and 75 GPD
<b>Minimum Flow Rate @ 60psi</b>	0.5 gal/min
<b>Quick Change Filter Dimensions</b>	7.54 x 30.9 (2.96" x 12.17")
<b>Inlet/Outlet Connections</b>	1/4" Quick Connect
<b>Working Temperature Range</b>	4-38° C (40-100° F)
<b>Working Pressure Range</b>	207-828 kPa (30-120 psi)

# Drinking Water Solutions

## 75GPD H.E.R.O.™ High Efficiency RO System

With the quality of our drinking water increasingly coming under question, people are now looking for alternative sources of quality water. Reverse Osmosis Drinking Water Systems provide the most convenient and economical solution.

The HIGH EFFICIENCY REVERSE OSMOSIS (HERO) SYSTEM Virtually wastes no water with over 99.9% recovery.

Comparable systems typically waste 4-12 gallons for every gallon of RO water produced.

Conserve  
WATER



### 25020189 Kit, Tank, Recirculation, H.E.R.O.™

Applied when the H.E.R.O.™ is installed under a kitchen sink or in a slab home without a basement. This tank provides blending of the HERO recirculated water and helps keep the system operating at its peak performance.

### Features:

- Heavy duty glass filled polypropylene construction provides double the strength, toughness & durability compared to most other RO's which are typically constructed with ABS.
- TFC 75 GPD reverse osmosis membrane provides up to 99% Total Dissolved Solids (TDS) rejection
- Pre-filters 10" five (5) micron Spun Polypropylene Sediment Cartridge and 10" Activated Carbon Cartridge
- Post filter: 10" Activated Carbon Cartridge
- Choose from air gap or non-air gap chrome plated faucets
- 3.0 Gallon NSF Certified plastic storage tank
- 3/8" outlet tubing for higher flows
- Automatic shut-off valve
- Exclusive serviceable check valve eliminates spring 'chatter' noise common in other RO's
- Quick connect fittings for ease of installation
- Powder coated bracket
- Dual purpose wrench for use on membrane cap and filter housing
- Dimensions: 15.0"w x 17.7"h x 6.9"d Pump Model

Feed Water Guidelines	
Pressure	30 - 70 psi
Temperature	40 - 77 °F
Total Dissolved Solids (TDS) <sup>1</sup>	0 - 2500 ppm (0 - 2500 mg/L)
pH	5 - 10
Chlorine <sup>2</sup>	0 - 3 ppm (0 - 3 mg/L)
Chloramine	0 - 3 ppm (0 - 3 mg/L)
Turbidity	0 - 10 NTU
Hardness <sup>3</sup>	0 - 10 gpg
Iron	<0.2 ppm (<0.2 mg/l)
Bacterial Quality	Potable

Model #	Part #	Stage 1	Stage 2	Stage 3	Stage 4	Storage Tank	Faucet
H.E.R.O.™	20010075	Sediment Filter	Activated Carbon Block Filter	Reverse Osmosis Membrane	Activated Carbon Polishing Filter	Plastic Tank - 3.0 Gallons	Chrome - Standard



# Drinking Water Solutions

## 475 Pro Series Reverse Osmosis Drinking Water System



*Change filters in  
seconds without  
turning off water!  
No tools required!*



**Booster Pump Model**

### Features & Benefits:

- Removes 99.9% TDS & impurities as small as an atom!
- 75 GPD NSF Certified TFC reverse osmosis membrane
- 5 micron sediment pre-filter; 10 micron coconut carbon pre & post filters
- Booster pump model with inlet solenoid raises water pressure to ideal level for rural supplies with low pressure or high TDS
- 3/8" tubing for high product flow rates
- Installation & filter changes are quick and easy
- Quick change ¼ turn bayonet-style disposable cartridges are more **sterile** and **can be changed in seconds**
- Includes standard chrome faucet, NSF Certified 3.0 gallon storage tank, inlet saddle valve, and 5ft ¼ tubing
- **Two year warranty** (excluding consumable cartridges and membrane)

ITEM #	MODEL	DESCRIPTION	Weight (LBS)
17014692	475PRO-RO	REVERSE OSMOSIS: 4 STAGE; 75 GPD; 3.2 GAL NSF TANK C/W FAUCET & INSTALL KIT	21
17014693	475PRO-ROBP	REVERSE OSMOSIS: 4 STAGE; 75 GDP; 3.2 GAL NSF TANK C/W BOOSTER PUMP, FAUCET & INSTALL KIT	25

**Bottled Water Quality  
Right At Your Own Tap!**

# Drinking Water Solutions

## Under Sink Filtration System

*This affordable under sink filter option offers the convenience of disposable quick connect filters!*



*Change filters in  
seconds without  
turning off water!  
No tools required!*

### Features & Benefits:

- Low cost alternative to RO
- No reject water (100% water used)
- Leaves healthy nutrients in water
- Installation & filter changes are quick and easy
- Quick change bayonet-style disposable cartridges are more **sterile** and can be **changed in seconds**
- Includes standard chrome faucet, inlet saddle valve, and 5ft ¼ tubing

DESCRIPTION	MICRON	FLOW RATE	CAPACITY (Gallons)
SEDIMENT FILTER SED-10 BLUE (475 Q SERIES)	5	1 GPM	900
CARBON FILTER COC-10 PURPLE (475 SERIES)	10	1 GPM	1500

ITEM #	MODEL	DESCRIPTION	WEIGHT (LBS)
17014691	475 QC-2 FILTER	DUAL STAGE FILTER: 10" SEDIMENT; 10" GRANULAR ACTIVATED CARBON	5

**Disposable Quick Connect  
Filters Are More Sterile!**



# Whole-House Filtration

## High-Flow Whole House Carbon Filtration

*This whole-house filtration system provides economical, high flow solutions for taste & odor removal.*

### Features:

- High-flow Dual Filtration System
- Up to 75,000 gallons of clean, great tasting odor-free water
- 1" porting for flow rates up to 8 gpm
- Large 20" Cartridges for long lasting performance

ITEM #	MODEL	DESCRIPTION	WEIGHT (LBS)
17014611	CF2020	HIGH-FLOW DUAL STAGE CARBON FILTER: 20" GRANULAR ACTIVATED CARBON CARTRIDGES & MOUNTING BRACKET	21



*Provides up to **75,000 Gallons** of Great Tasting, **Odor-Free Water***



*That is = **15,000** 5 Gallon Jugs!*

## Test Kits



*Testing water on-site is a fast and easy way to understand your clients needs. Choose the appropriate test kit for your local water conditions.*

ITEM #	MODEL	DESCRIPTION
17014696	TESTKIT1	HARDNESS, CHLORINE & TDS TEST KIT
17014697	TESTKIT2	HARDNESS, CHLORAMINES & TDS TEST KIT
17014698	TESTKIT3	HARDNESS, IRON, SULPHUR, pH, MANGANESE & TDS TEST KIT

# Specifications

## Water Softeners

Item #	Model	Capacity Grains		Flow Rate		Mineral Tank Size	Resin Cu. Ft.	Brine Tank / Cabinet Size Inches	Salt Cap Lbs	Shipping Weight Lbs
		@ 3 lbs/cu ft	@ 6 lbs/cu ft	Service USGPM	Backwash USGPM					
17014571	WS685HET-1.0	15,400	25,000	11.0	2.0	9 x 48	1.00	18.1 x 34.5	300	122
17014572	WS685HET-1.5	23,100	37,500	11.2	2.4	10 x 54	1.50	18.1 x 34.5	300	155
17014573	WS685HET-2.0	30,000	50,000	12.2	3.5	12 x 52	2.00	20.3 x 37.4	350	158
Maximum Efficiency 5,060 grains /lb salt										

Item #	Model	Capacity Grains		Flow Rate		Mineral Tank Size	Resin Cu. Ft.	Brine Tank / Cabinet Size Inches	Salt Cap Lbs	Shipping Weight Lbs
		@ 3 lbs/cu ft	@ 6 lbs/cu ft	Service USGPM	Backwash USGPM					
17014561	WS665-1.0	14,000	22,000	11.0	2.0	9 x 48	1.00	18.1 x 34.5	300	104
17014562	WS665-1.5	21,000	33,000	11.2	2.4	10 x 54	1.50	18.1 x 34.5	300	133

## HTO Whole-House System

Specifications	HTOC685-1.0 17014591	HTOC685-1.5 17014592
	HTOCK685-1.0 17014695	HTOCK685-1.5 17014596
<b>Factory Settings</b>		
Salt Used - Per Regeneration	6.0 lbs	9.0 lbs
Water Used - Regeneration	86.4 gal	148 gal
Hardness Removal - Grains	25,000	37,500
Tank #1 Carbon Quantity - Cubic Feet	1.0 ft³	1.50 ft³
Tank #2 Resin Quantity - Cubic Feet	1.0 ft³	1.50 ft³
Tank Size	9x48	10x54
Tank Jacket I Media Loaded	Yes	Yes
Brine Tank I Cabinet Size (Inches)	18.1 x 34.5	18.1 x 34.5
Salt Storage Capacity	240 lbs	240 lbs
Flow Rate @ 15 psi Pressure Drop	7.2 gpm	7.4 gpm
Flow Rate @ 25 psi Pressure Drop	10.0 gpm	10.1 gpm
Back Wash Flow Rate	2.4 gpm	3.5 gpm
Shipping Weight	154 lbs	171 lbs
Regeneration Type	Counter Current I Up Flow	
Plumbing Connections	3/4" and 1" Included	
Resin Type	Canature 8% High Capacity Ion Exchange Resin	
Carbon Type	Catalytic Carbon (KDF also used in HTOCK Models)	
Electrical Requirements	Input 120V 60 Hz - Output 12V 650mA	
Water Temperature	Min 39 - Max. 100° F	
Water Pressure	Min. 20 - Ma . 125 psi	

## Chemical Free Filters

Specifications	IS665-1.0 17014651
	IS665-1.5 17014653
	CFNB-1.5 17014612
	CFNB-1.5 (KDF) 17014614
Media Type	Birm
Service Flow Rates	
Normal	3.0 gpm
Peak	6.0 gpm
Backwash Flow Rate	5.0 gpm
Media Volume - Cubic Feet	1.0 ft³
Filter Tank Size	10x44
Air Contact Tank Size	8x44
Media Loaded	Yes
Tank Jacket	No
Shipping Weight	150 lbs
Plumbing Connections	3/4" and 1" Included
Electrical Requirements	Input 120V 60 Hz - Output 12V 650mA
Water Temperature	Min 39 - Max. 100° F
Water Pressure	Min. 20 - Max. 125 psi

## Automatic Water Filters

Specifications	CF685-1.0 17014661	CF685-1.5 17014662	CF665-1.0 17014631	CF665-1.5 17014847	CFK665-1.0 17014681	CFK665-1.5 17014682	CFK685-1.0 17014665	CFK685-1.5 17014666
Carbon Type	GAC	GAC	GAC	GAC	GAC w KDF	GAC w KDF	GAC w KDF	GAC w KDF
Normal Service Flow Rate	5.0 gpm	7.0 gpm	5.0 gpm	7.0 gpm	5.0 gpm	7.0 gpm		
Peak Service Flow Rate	7.0 gpm	10.0 gpm	7.0 gpm	10.0 gpm	7.0 gpm	10.0 gpm		
Backwash Flow Rate	4.0 gpm	5.0 gpm	4.0 gpm	5.0 gpm	4.0 gpm	5.0 gpm		
Carbon Volume - Cubic Feet	1.0 ft³	1.5 ft³	1.0 ft³	1.5 ft³	1.0 ft³	1.5 ft³		
Filter Tank Size	9x48	10x54	9x48	10x54	9x48	10x54		
Tank Jacket I Media Loaded	Yes	Yes	Yes	Yes	Yes	Yes		
Shipping Weight	60 lbs	78 lbs	60 lbs	78 lbs	60 lbs	78 lbs		
Plumbing Connections	3/4" and 1" Included							
Electrical Requirements	Input 120V 60 Hz - Output 12V 550mA							
Water Temperature	Min 39 - Max. 100 degrees Fahrenheit							
Water Pressure	Min. 20 - Max. 125 psi							







**Grow Your  
Water Conditioning  
Business ...**

**It's Profitable  
& Easy!**



**Benjamin  
Franklin**  
**THE PUNCTUAL PLUMBER®**



**1-866-936-6622**



**1-931-438-4827**



**orders.pbg@4buymax.com**



**Private Brands Group**  
1237 Huntsville Highway  
Suite E  
Fayetteville, TN  
37334